

The de Beaumont Foundation commissioned Morning Consult to survey and track awareness of public health departments, perceptions of their value, and public health priorities. Two surveys were conducted online between May 14-17, 2021 and May 12-15, 2022 among 2,200 U.S. citizens.

NEARLY ALL AMERICANS VIEW PUBLIC HEALTH DEPARTMENTS AS AN ESSENTIAL ELEMENT OF A HEALTHY COMMUNITY

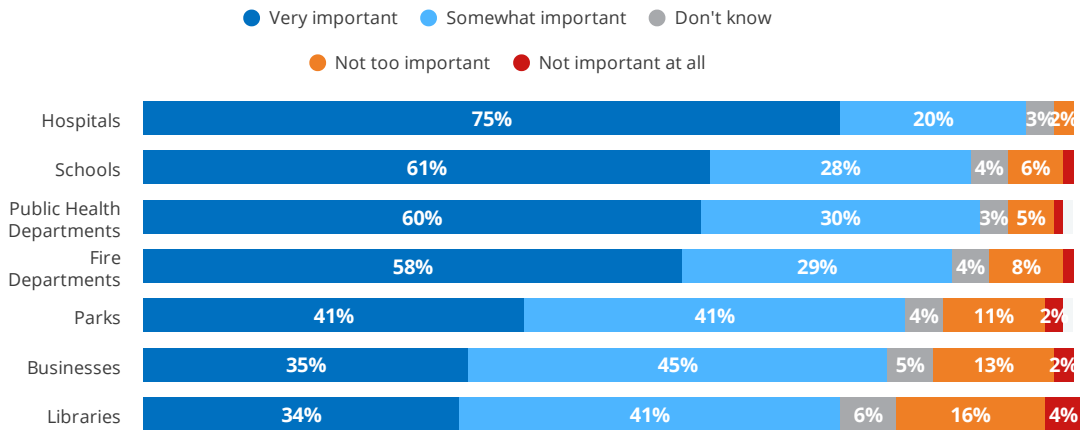


90%

of adults think public health departments play an important role in creating a healthy community.

Adults rated hospitals and public health departments as playing a more important role than schools, fire departments, police departments, parks, businesses, and libraries.

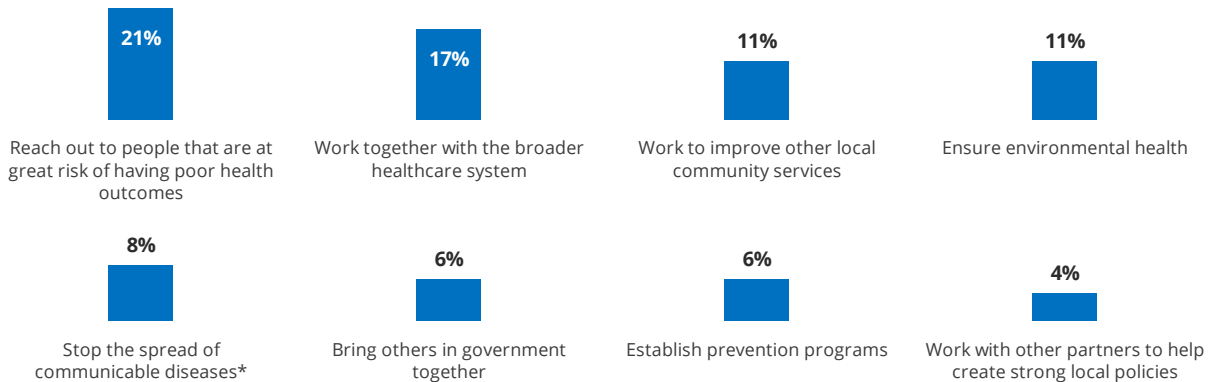
In your opinion, how important of a role, if at all, do each of the following have in creating a healthy community?



Data from 2022. Figures may not add up to 100% due to rounding.

Americans think the most important service of their local health department is to reach out to people who are at the greatest risk of having poor health outcomes.

Which of the following would you say has the **most important role** in creating a healthy community?



Data from 2022

* Stop the spread of communicable diseases, such as COVID-19 (8%). Stop the spread of communicable diseases (5%)

ABOUT HALF OF AMERICANS SAY THEY'RE FAMILIAR WITH THEIR LOCAL HEALTH DEPARTMENTS AND THEIR LOCAL HEALTH OFFICIAL.

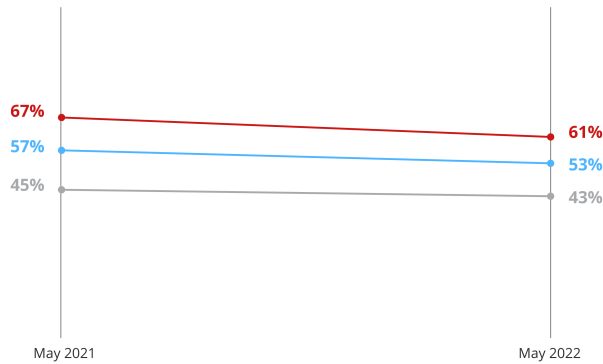
How familiar, if at all, would you say you are with each of the following? And, based on what you know, do you have a favorable or unfavorable opinion of your local health official?



Data from 2022

Among adults who are familiar with their local public health official, fewer have a favorable view than they did a year ago.

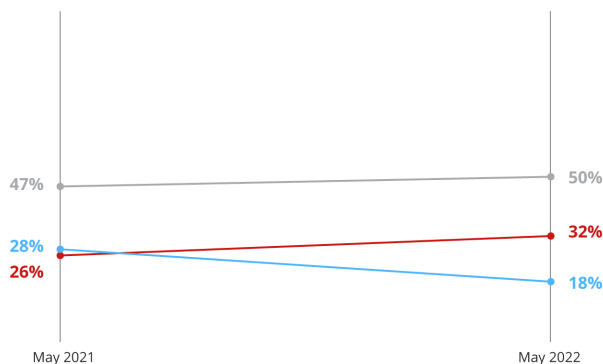
- Familiar with their public health department
- Familiar with their public health official
- Favorable opinion about their public health official



AMERICANS ARE MORE LIKELY TO SAY THE HEALTH OF THEIR COMMUNITY HAS GOTTEN WORSE OVER THE PAST YEAR RATHER THAN BETTER

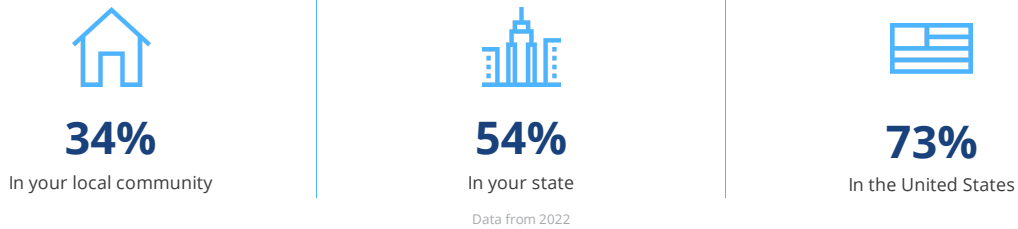
Thinking about the community you live in, over the past year, do you think the health of the people in your community has gotten better, gotten worse, or stayed about the same?

- Better
- Stayed the same
- Worse



ADULTS ARE MORE LIKELY TO SAY RACIAL DISCRIMINATION IS A PROBLEM IN THE NATION THAN IN THEIR OWN STATE OR COMMUNITY

How much of a problem, if at all, is racial discrimination in your local community, your state, and in the U.S.?

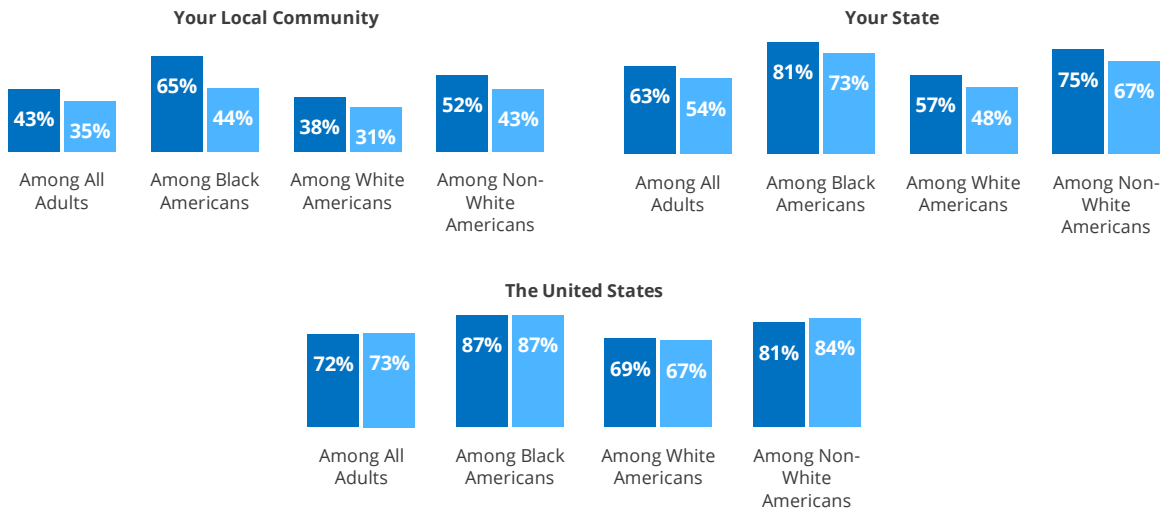


Non-white Americans are more likely than white Americans to say racial discrimination is a problem in their local community, state, and the United States.

How much of a problem, if at all, is racial discrimination in...

● May 2021 ● May 2022

% who considered racial discrimination a large problem or somewhat of a problem



59% OF BLACK AMERICANS SAY RACIAL DISCRIMINATION HAS AN IMPACT ON THEIR OWN HEALTH

24% of all Americans say racial discrimination has an impact on their own health, down from 29% in 2021.

How much of an impact does racial discrimination have on your health outcomes?

